


PLACEMENT REPORT


BATCH 2020-22

A SPECTACULAR
PLACEMENT
SCRIPTED BY
CLASS OF 2022
98.8%





RECORD 25% RISE IN AVERAGE SALARY



Jaipuria Institute of Management announces yet another spectacular placement season for the batch of 2020-22 with over 98% of its graduating students across 4 campuses receiving their choice of organizations and roles.

The class of 2022 excelled in their performances to grab best of the offers and raised their average salary by record 25% over last year. While centralized placements for all its four campuses gives our students an edge over other B-Schools recruiters to get a wide range of students to select from.

Sharp rise in offers from consulting, IT & ITES domain.

It is re-emphasising of the trust and faith of recruiters with the students of Jaipuria that 25% of growth has been witnessed in this year's placements especially in the consulting, IT and ITES sectors, recruiting over 350+ students and Big 4 accounting firms making offers to over 150 students of Jaipuria.

PLACEMENT HIGHLIGHTS

Average Package

11.49

LPA

Top 10%

10.51

LPA

Top 20%

9.42

LPA

Top 50%

7.8

LPA

Overall Average

27 LPA

HIGHEST
INTERNATIONAL
PACKAGE

19.18 LPA

HIGHEST
DOMESTIC
PACKAGE

LEADING RECRUITERS

90+

Deloitte.

70+

HCL

40+

ICICI Bank

20+

genpact

20+

EY
Building a better
working world

20+

pwc

OFFER STATISTICS

250+

Total
Recruiters
Visited

60+

Student with
multiple
offers

110+

New
Recruiters

900+

Total No.
of offers

PROFILES OFFERED

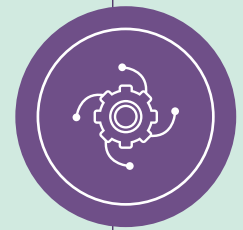


FINANCE

Credit / Risk / Advisory / Portfolio Management / Financial Operations / Investment Banking / Financial Modeling / Spend Analytics / Digital Banking

OPERATIONS

Supply Chain Consulting / Procurement Advisory / Service Operations / Analyst (Logistics)

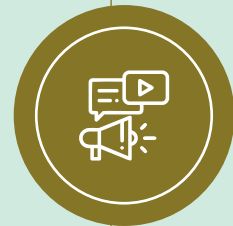


ANALYTICS

Business Analyst / Analytics Practitioner / Data Analytics / Cloud Specialist / Product Analyst / Artificial Intelligence / Machine Learning

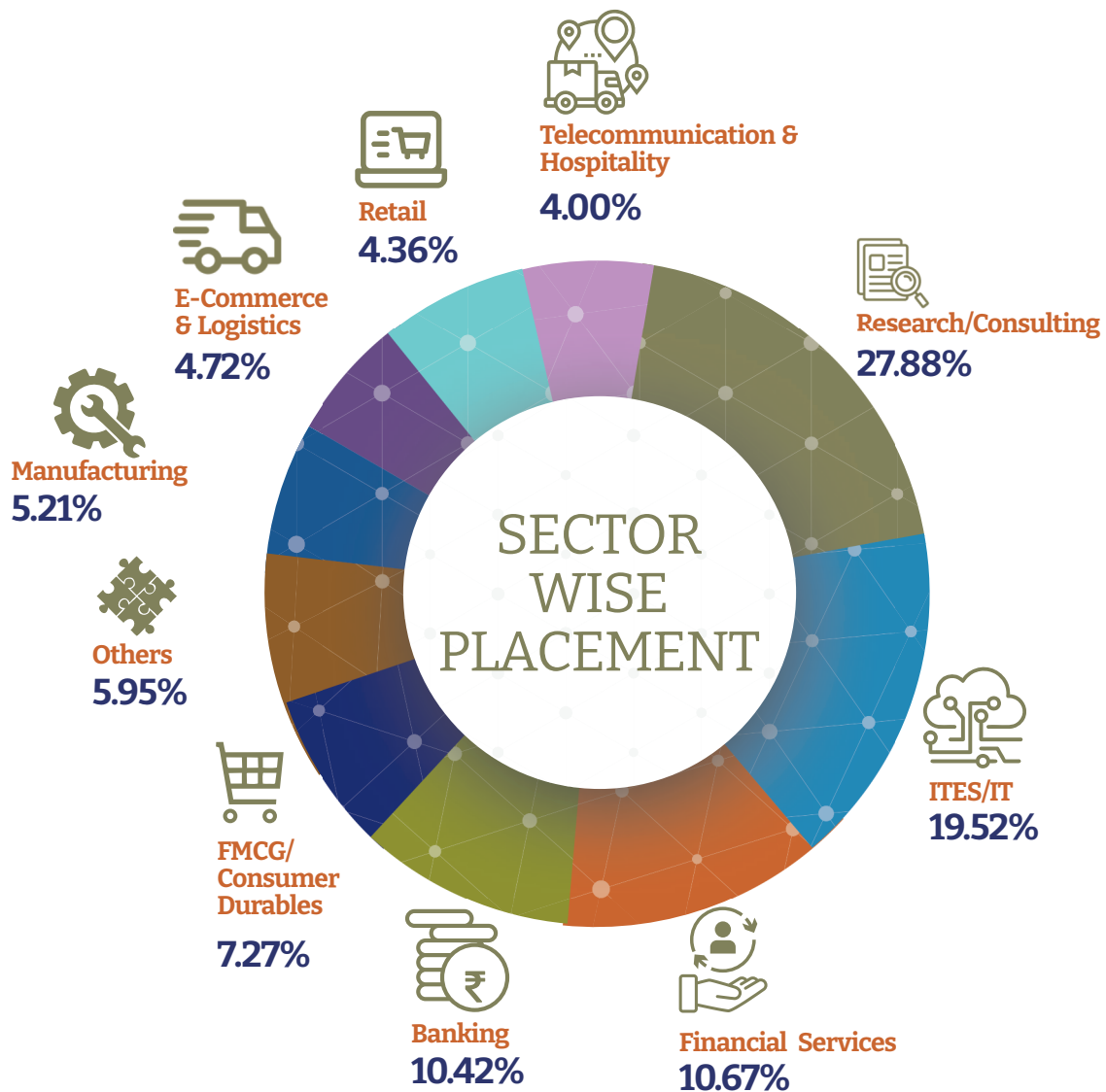
MARKETING

Product Development / Research Analyst / Product Consultant / Customer Insights / Brand Marketing / Trade Marketing / Digital Marketing



HUMAN RESOURCES

HR Transformation / Talent Acquisition / HR Analytics / HRBP / L&D / PMS



FUNCTION WISE PLACEMENT

36.2%

Marketing & Sales

26.8%

Research & Analytics

16.3%

Operations

14.1%

HR & Project Management

5.4%

Retail & Logistics

1.2%

Others


45%




23%




13%




12%




5%




2%



EDUCATIONAL BACKGROUND

OUR PROMINENT RECRUITERS



CORPORATE OFFICE

Jaipuria Institute of Management
1/3 (Block 1, Plot No.3) WHS Timber Market,
Kirti Nagar, Near Mayapuri Chowk, New Delhi- 110015
M. +91 9810613213, 9873028515
E. placements@jaipuria.ac.in

LUCKNOW

Jaipuria Institute of Management
Vineet Khand, Gomti Nagar,
Lucknow 226 010
M. +91 9711943794
E. placements.lucknow@jaipuria.ac.in

NOIDA

Jaipuria Institute of Management
A-32A, Sector 62, Noida 201 309
M. +91 953656016
E. placements.noida@jaipuria.ac.in

JAIPUR

Jaipuria Institute of Management
1, Bambala Institutional Area,
Pratap Nagar, Sanganer, Jaipur 302 033
M. +91 7510099112
E. placements.jaipur@jaipuria.ac.in

INDORE

Jaipuria Institute of Management
Campus: Dakachya, Indore Dewas Highway,
Near Shipra Naka, Indore 453 771
M. +91 9179555441
E. placements.indore@jaipuria.ac.in